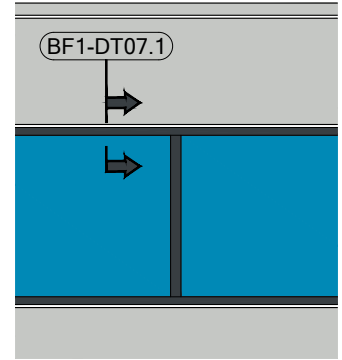
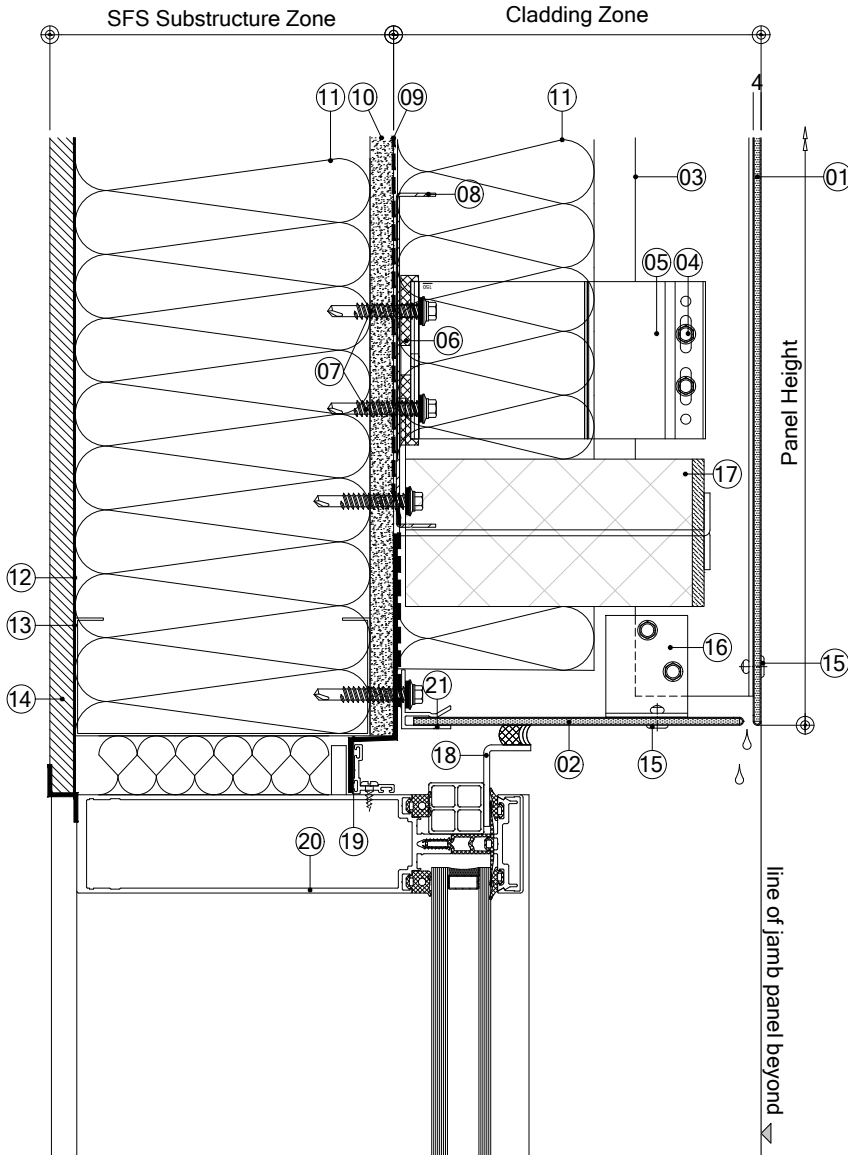


Drawing is the copyright of Britfab Ltd and may not be copied, any unauthorised distribution to third parties is strictly forbidden.  
 Product changes in the sense of a technical progress are reserved. All advice recommendation and information is given to the best of our knowledge but without any obligation on our part.

ELEVATION REFERENCE


BF1-DT07.1 - CLADDING TO GLAZING HEAD DETAIL (ALTERNATIVE)



**DRG. KEY**

- 01 - BF1 Wall Panel
  - 02 - BF1 Head closure
  - 03 - BFMFT-T Vertical support rail
  - 04 - Support rail to helping hand bracket - 4.8mm stainless steel tek screw
  - 05 - BFMFT-MFI Helping hand bracket (size varies to suit cladding zone)
  - 06 - 5mm thk isolator pad
  - 07 - Bracket to substructure fixing - 5.5mm stainless steel tek screw (x2 per bracket)
  - 08 - Indicative horizontal support rails, fixed back to support structure \*\*
  - 09 - Breather membrane \*\*
  - 10 - Cementitious board - thickness to suit specification \*\*
  - 11 - Insulation build up - type and thickness to suit project spec/u-value \*\*
  - 12 - V.C.L. \*\*
  - 13 - Steel frame \*\*
  - 14 - Internal finishes \*\*
  - 15 - Panel to support rail fixing \*\*
  - 16 - Additional support angle.
  - 17 - Indicative open state vertical fire barrier and bracket \*\*
- Fire breaks to be located in line with project fire strategy and positioning confirmed by project supervising body or fire officer.*
- 18 - Glazing flashing, saver and mastic seal. \*\*
  - 19 - EPDM Sealed into curtain wall system and bonded to adjacent structure to create weather and air tight seal - min 100mm bond to adjacent structure \*\*
  - 20 - Indicative glazing / curtain wall details \*\*
  - 21 - BF Glazing Connector

Items marked with \*\* denotes indicative items, not part of Britfab supply

Rev	Date	Alteration	Initial
 Unit 16, Kyle Road, Irvine Ayrshire KA2 8JU Office: 01294 274 257 Web: britfab.com			
Title: BF1 - Glazing Head Detail (ALT)			
Drawn By: GD		Checked By: -	
Scale: 1:4 @ A4		Date: 00.00.00	
System Ref: - BF1	Drawing Number: - DT07.1	Revision: - 00	
Status: INFORMATION			