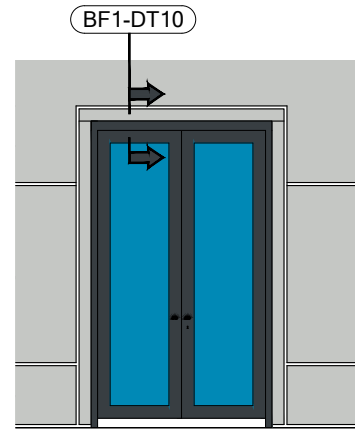
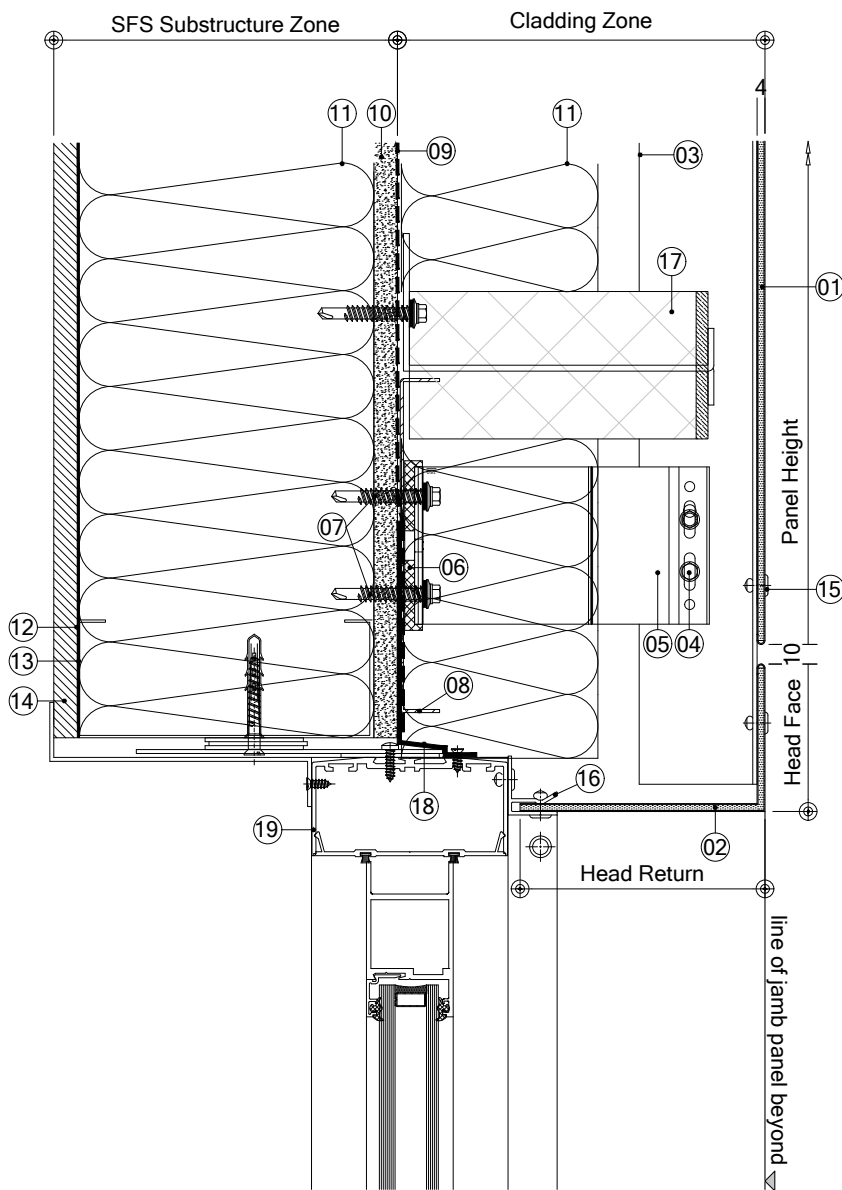


Drawing is the copyright of Britfab Ltd and may not be copied, any unauthorised distribution to third parties is strictly forbidden.  
 Product changes in the sense of a technical progress are reserved. All advice recommendation and information is given to the best of our knowledge but without any obligation on our part.

ELEVATION REFERENCE

BF1-DT10 - CLADDING TO DOOR HEAD DETAIL



DRG. KEY

- 01 - BF1 Panel
- 02 - BF1 Door Pod - Head
- 03 - BFMFT-T Vertical support rail
- 04 - Support rail to helping hand bracket - 4.8mm stainless steel tek screw
- 05 - BFMFT-MFI Helping hand bracket (size varies to suit cladding zone)
- 06 - 5mm thk isolator pad
- 07 - Bracket to substructure fixing - 5.5mm stainless steel tek screw (x2 per bracket)
- 08 - Indicative horizontal support rails, fixed back to support structure \*\*
- 09 - Breather membrane \*\*
- 10 - Cementitious board - thickness to suit specification \*\*
- 11 - Insulation build up - type and thickness to suit project spec/u-value \*\*
- 12 - V.C.L. \*\*
- 13 - Steel frame \*\*
- 14 - Internal finishes \*\*
- 15 - Panel to support rail fixing \*\*
- 16 - BF Glazing Connector
- 17 - Indicative open state vertical fire barrier and bracket \*\*
- 18 - EPDM \*\*
- 19 - Indicative doorset \*\*

Items marked with \*\* denotes indicative items, not part of Britfab supply

Rev	Date	Alteration	Initial
Title: BF1 - Door Head Detail			
Drawn By: GD		Checked By: -	
Scale: 1:4 @ A4		Date: 00.00.00	
System Ref: - BF1		Drawing Number: - DT10	
		Revision: - 00	
Status: INFORMATION			