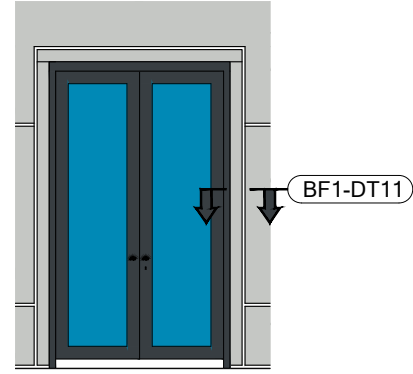


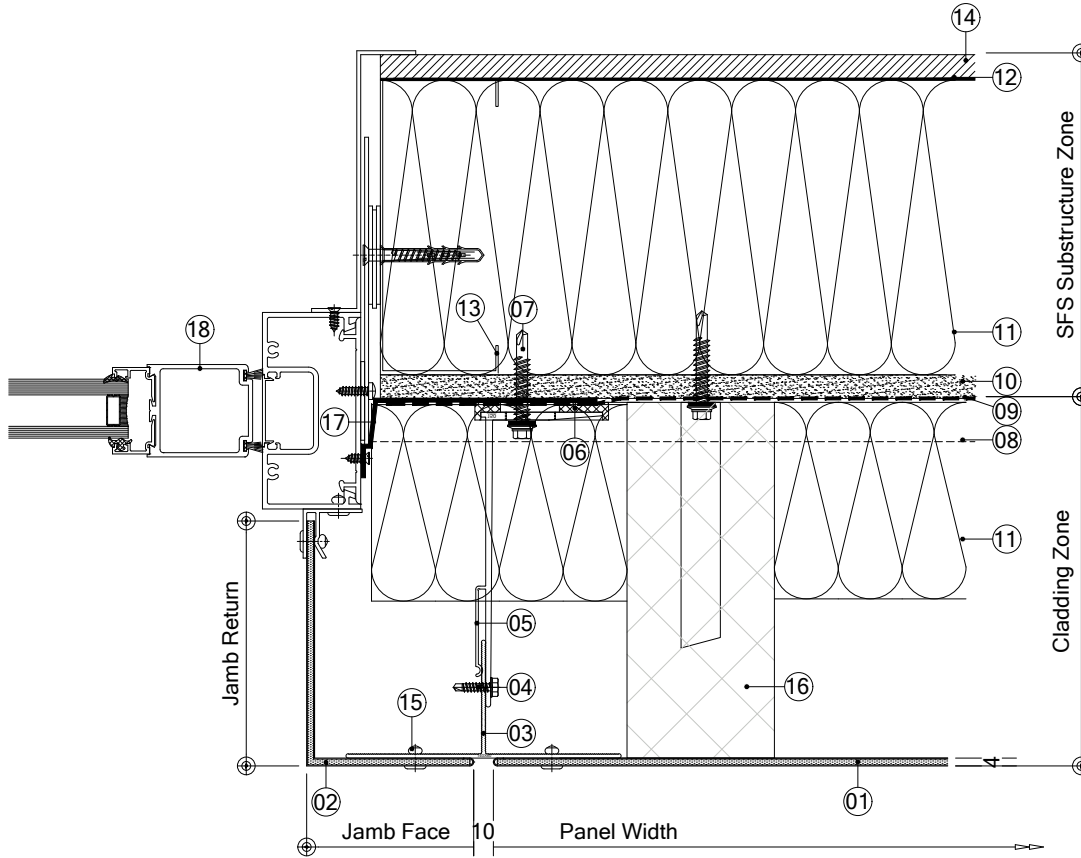
Drawing is the copyright of Britfab Ltd and may not be copied, any unauthorised distribution to third parties is strictly forbidden.

Product changes in the sense of a technical progress are reserved. All advice recommendation and information is given to the best of our knowledge but without any obligation on our part.

ELEVATION REFERENCE



BF1-DT11 - CLADDING TO DOOR JAMB DETAIL



DRG. KEY

- 01 - BF1 Panel
- 02 - BF1 Door Pod - Jamb
- 03 - BFMFT-T Vertical support rail
- 04 - Support rail to helping hand bracket - 4.8mm stainless steel tek screw
- 05 - BFMFT-MFI Helping hand bracket (size varies to suit cladding zone)
- 06 - 5mm thk isolator pad
- 07 - Bracket to substructure fixing - 5.5mm stainless steel tek screw (x2 per bracket)
- 08 - Indicative horizontal support rails, fixed back to support structure **
- 09 - Breather membrane **
- 10 - Cementitious board - thickness to suit specification **
- 11 - Insulation build up - type and thickness to suit project spec/u-value **
- 12 - V.C.L. **
- 13 - Steel frame **
- 14 - Internal finishes **
- 15 - Panel to support rail fixing **
- 16 - Indicative closed state vertical fire barrier and bracket **
- 17 - EPDM *
- 18 - Indicative doorset detail **

Items marked with ** denotes indicative items, not part of Britfab supply

Rev	Date	Alteration	Initial
Unit 16, Kyle Road, Irvine Ayrshire KA2 8JU Office: 01294 274 257 Web: britfab.com			
Title: BF1 - Door Head Detail			
Drawn By: GD		Checked By:-	
Scale: 1:4 @ A4		Date: 00.00.00	
System Ref: - BF1		Drawing Number: - DT11	Revision: - 00
Status: INFORMATION			