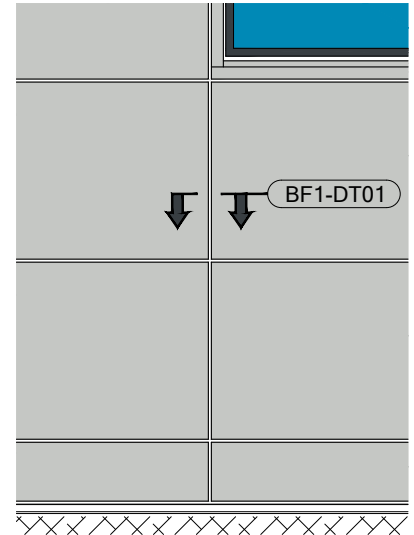


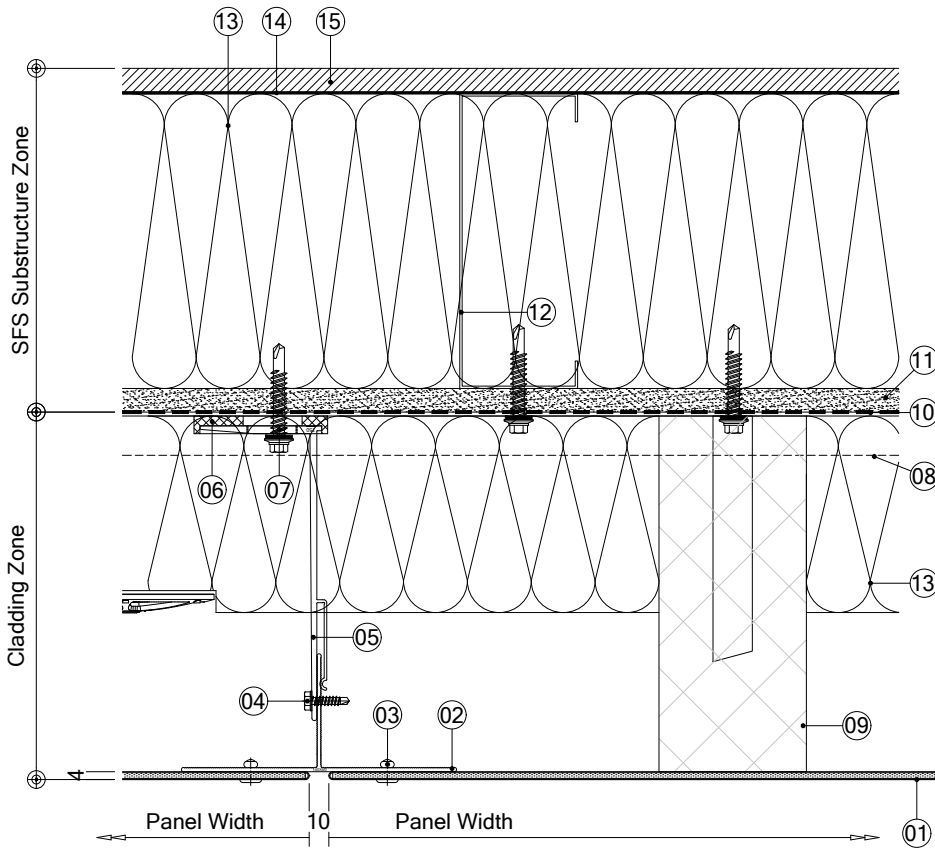
Drawing is the copyright of Britfab Ltd and may not be copied, any unauthorised distribution to third parties is strictly forbidden.

Product changes in the sense of a technical progress are reserved. All advice recommendation and information is given to the best of our knowledge but without any obligation on our part.

ELEVATION REFERENCE




BF1-DT01 - VERTICAL PANEL JOINT



**DRG. KEY**

- 01 - BF1 Panel
- 02 - BFMFT-T Vertical support rail
- 03 - Panel to support rail fixing \*\*
- 04 - Support rail to bracket fixing - 4.8mm stainless steel tek screw (x2 per bracket)
- 05 - BFMFT-MFI Helping hand bracket (size varies to suit cladding zone)
- 06 - 5mm thk isolator pad
- 07 - Bracket to substructure fixing - 5.5mm stainless steel tek screw (x2 per bracket)
- 08 - Indicative horizontal support rails, fixed back to support structure \*\*
- 09 - Indicative closed state vertical fire barrier and bracket \*\*  
*Fire breaks to be located in line with project fire strategy and positioning confirmed by project supervising body or fire officer.*
- 10 - Breather membrane \*\*
- 11 - Cementitious board - thickness to suit specification \*\*
- 12 - Steel frame \*\*
- 13 - Insulation build up - type and thickness to suit project spec/u-value \*\*
- 14 - V.C.L. \*\*
- 15 - Internal finishes \*\*

Items marked with \*\* denotes indicative items, not part of Britfab supply

Rev	Date	Alteration	Initial
 <span style="font-size: small;">Unit 16, Kyle Road, Irvine Ayrshire KA2 8JU Office: 01294 274 257 Web: britfab.com</span>			
Title: BF1 - Vertical Panel Joint			
Drawn By: GD		Checked By: -	
Scale: 1:4 @ A4		Date: 00.00.00	
System Ref: - BF1		Drawing Number: - DT01	Revision: - 00
Status: INFORMATION			