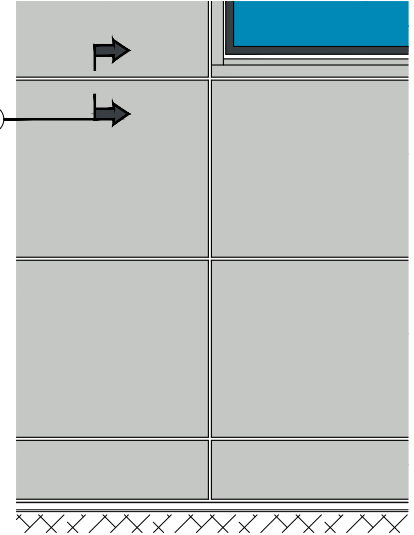


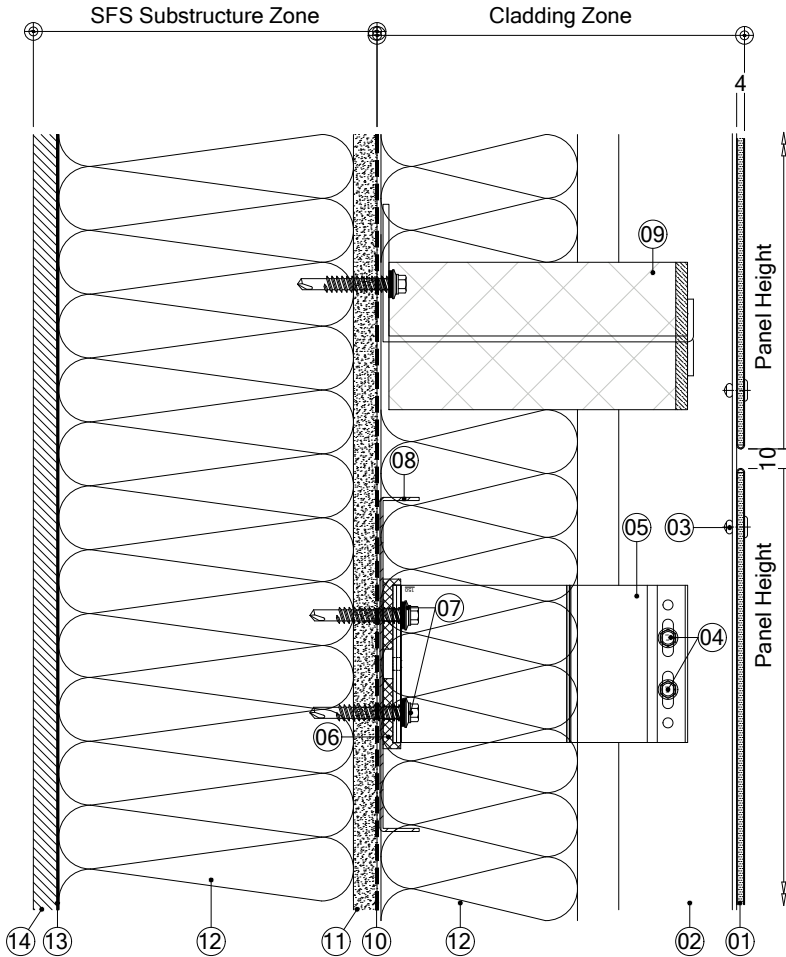
Drawing is the copyright of Britfab Ltd and may not be copied, any unauthorised distribution to third parties is strictly forbidden.  
 Product changes in the sense of a technical progress are reserved. All advice recommendation and information is given to the best of our knowledge but without any obligation on our part.

ELEVATION REFERENCE

BF1-DT02



BF1-DT02- HORIZONTAL PANEL JOINT



DRG. KEY

- 01 - BF1 Panel
  - 02 - BFMFT-T Vertical support rail
  - 03 - Panel to support rail fixing\*\*
  - 04 - Support rail to bracket fixing - 4.8mm stainless steel tek screw (x2 per bracket)
  - 05 - BFMFT-MF1 Helping hand bracket (size varies to suit cladding zone)
  - 06 - 5mm thk isolator pad
  - 07 - Bracket to substructure fixing - 5.5mm stainless steel tek screw (x2 per bracket)
  - 08 - Indicative horizontal support rails, fixed back to support structure \*\*
  - 09 - Indicative open state vertical fire barrier and bracket \*\*
- Fire breaks to be located in line with project fire strategy and positioning confirmed by project supervising body or fire officer.*
- 10 - Breather membrane \*\*
  - 11 - Cementitious board - thickness to suit specification \*\*
  - 12 - Insulation build up - type and thickness to suit project spec/u-value \*\*
  - 13 - V.C.L. \*\*
  - 14 - Internal finishes \*\*

Items marked with \*\* denotes indicative items, not part of Britfab supply

Rev	Date	Alteration	Initial
Title: BF1 - Horizontal Panel Joint			
Drawn By: GD		Checked By: -	
Scale: 1:4 @ A4		Date: 00.00.00	
System Ref: - BF1		Drawing Number: - DT02	Revision: - 00
Status: INFORMATION			